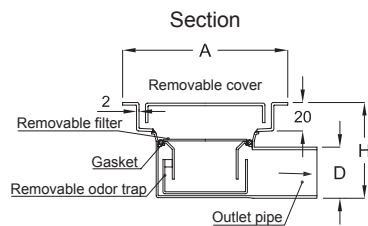
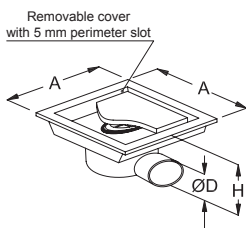


**Inoxsystem® IDrain - Floor drain with odor trap entirely made of 2 mm thick stainless steel and completely inspectable to ensure high standards of robustness, cleanliness and hygiene**

### Inoxsystem® IDrain 3066 - Floor drain with horizontal outlet



- Satin finish edges
- Satin finish standard cover
- Perimeter slot
- Removable filter and odor trap
- Entirely made of 2 mm thick stainless steel



**Inoxsystem® IDrain 3066 - Floor drain with standard cover and perimeter slot - square shape satin finish edges - horizontal outlet - removable filter and odor trap**

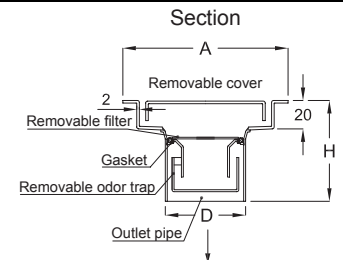
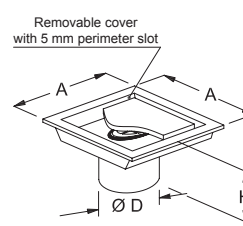
Art.:	A Width	B Length	D Ø Outlet	Flow rate lt/min	Removable cover
30664010	100	70	40	12	Standard
30665010	100	80	50	12	Standard
30664015	150	70	40	25	Standard
30665015	150	80	50	25	Standard
3066AR	On request	70/80	40/50	12/25	Standard

Dwg. No. 3066 - Made of: Aisi 304 stainless steel, 2 mm thick - Aisi 316 on request

### Inoxsystem® IDrain 3068 - Floor drain with vertical outlet



- Satin finish edges
- Satin finish standard cover
- Perimeter slot
- Removable filter and odor trap
- Entirely made of 2 mm thick stainless steel



**Inoxsystem® IDrain 3068 - Floor drain with standard cover and perimeter slot - square shape satin finish edges - horizontal outlet - removable filter and odor trap**

Art.:	A Width	B Length	D Ø Outlet	Flow rate lt/min	Removable cover
30685010	100	80	50	12	Standard
30687510	100	80	75	25	Standard
30685015	150	80	50	12	Standard
30687515	150	80	75	25	Standard
3068AR	On request	70/80	50/75	12/25	Standard

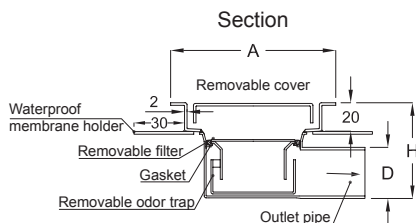
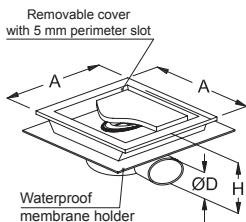
Dwg. No. 3068 - Made of: Aisi 304 stainless steel, 2 mm thick - Aisi 316 on request

**Inoxsystem® IDrain - Floor drain with odor trap entirely made of 2 mm thick stainless steel and completely inspectable to ensure high standards of robustness, cleanliness and hygiene - waterproof membrane holder**

### Inoxsystem® IDrain 3076 - Floor drain with horizontal outlet



- Satin finish edges
- Satin finish standard cover
- Perimeter slot
- Removable filter and odor trap
- Entirely made of 2 mm thick stainless steel
- Waterproof membrane holder



**Inoxsystem® IDrain 3076 - Floor drain with standard cover and perimeter slot - square shape satin finish edges - horizontal outlet - removable filter and odor trap**

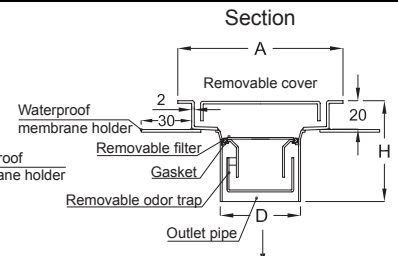
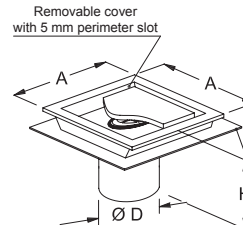
Art.:	A Width	B Length	D Ø Outlet	Flow rate lt/min	Removable cover
30764010	100	70	40	12	Standard
30765010	100	80	50	12	Standard
30764015	150	70	40	25	Standard
30765015	150	80	50	25	Standard
3076AR	On request	70/80	40/50	12/25	Standard

Dwg. No. 3076 - Made of: Aisi 304 stainless steel, 2 mm thick - Aisi 316 on request

### Inoxsystem® IDrain 3078 - Floor drain with vertical outlet



- Satin finish edges
- Satin finish standard cover
- Perimeter slot
- Removable filter and odor trap
- Entirely made of 2 mm thick stainless steel
- Waterproof membrane holder



**Inoxsystem® IDrain 3078 - Floor drain with standard cover and perimeter slot - square shape satin finish edges - horizontal outlet - removable filter and odor trap**

Art.:	A Width	B Length	D Ø Outlet	Flow rate lt/min	Removable cover
30785010	100	80	50	12	Standard
30787510	100	80	75	25	Standard
30785015	150	80	50	12	Standard
30787515	150	80	75	25	Standard
3078AR	On request	70/80	50/75	12/25	Standard

Dwg. No. 3078 - Made of: Aisi 304 stainless steel, 2 mm thick - Aisi 316 on request

- Art. "IDGS" lifting hook to facilitate the removal of covers, filters and odor traps of Inoxsystem® IDrain channels and floor drains.

**NOTE:** - All dimensions can be modified upon request.

- All the drawings, pictures and descriptions in this catalogue are property of Inoxsystem®. They cannot be used or copied without our formal permission.