

made in stainless steel AISI 304 - AISI 316 upon request

### Inoxsystem® Total Hygienic Standard modular channel with connection flanges, reinforces edges, gullies with odor trap, etc.

Dwg. N° 5001

ON REQUEST Art. - FLCTH - Connection flanges for easy transport and installation provided with silicone and stainless steel fixing screws

TH0871 Total Hygienic removable grating ANTIBACTERIAL and ANTI-SLIP without frame (LOAD CLASS D400 CERTIFIED)

Fully inspectable

Closely spaced reinforcement rods Ø 8 mm

ON REQUEST reinforced edges filled with epoxy resin Art. - BCR - (LOAD CLASS D400 CERTIFIED)

Mounting brackets

Reduced starting depth

h 68 mm on request

STANDARD starting depth

STANDARD end depth 12 lm max

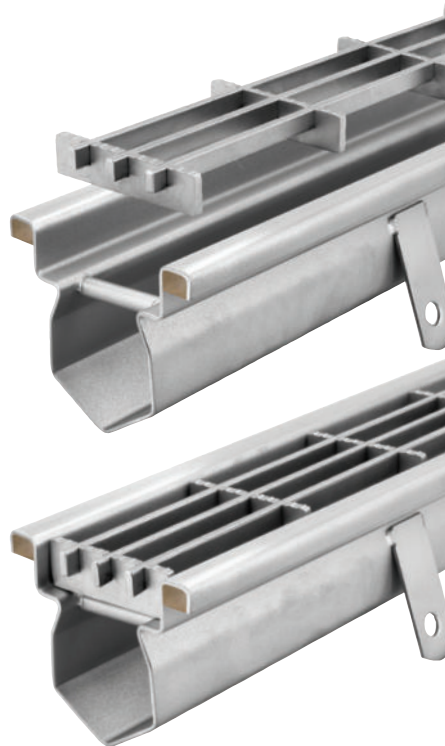
INCREASED end depth 25 lm max

With built-in slope

ROUND INTERNAL CORNERS

ON REQUEST Adjustable levelling feet Art. - PL -

Reinforced edges Art. - BCR -



Article	Description
TH100	100 mm wide Inoxsystem® Total Hygienic channel with satin finished edges, provided with TotalHygienic Multislot grating. Entirely made of 4 mm thick stainless steel, this grating is removable, without frame, with anti slip serrated micro-shot peened surface, rated for heavy equipment use.

Accessories	Description
BCR	Frame edge filled manually with epoxy resin*
FLCTH	Connection flanges for transport and installation
SCTH	Weld joint
UITH	Gully-channel connection
PL	Adjustable feet
A90TH	Channel angle
IL	1/2" inlet socket to let water flush in and clean the drain
TCTH	Butt weld end cap
SD	Direct outlet welded on channel body
INOX316	Stainless steel grade 316 on request

Inoxsystem® Total Hygienic TH100 channel with epoxy filled frame edge is



Different types of Total Hygienic gratings available on request - See pages 50 and 51

### Inoxsystem® Total Hygienic grating types

See pages 50 and 51

Standard \*

G0871

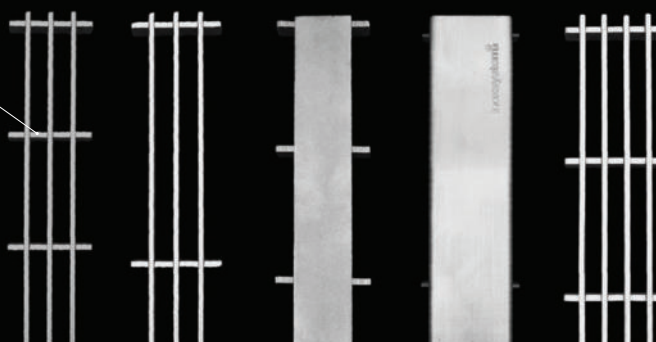
G0872

G0873

G0874

G0875

Dwg above: Dwg. 0871



\* Our #TotalHygienic channels are supplied with multi-slot grating as "Standard"

Dimensions can be modified on request - heavy duty top covers made from 6/8 mm thick stainless steel plate  
These technical drawings are property of INOXSYSTEM® and cannot be copied or reproduced without our prior written permission

Inoxsystem® TOTAL HYGIENIC DRAINAGE SYSTEMS

