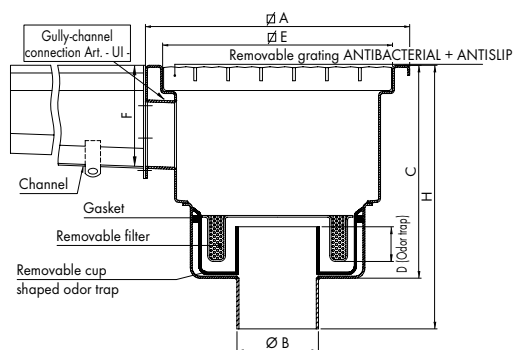


made of grade 304 stainless steel - grade 316 on request

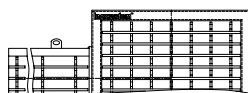
### Gullies with grating and vertical outlet, with one gully-channel connection removable Total Hygienic cup shaped odor trap pipe and filter basket.



F = OVERALL CHANNEL HEIGHT

Dwg. No. 0311

Total Hygienic Multi-Slot grating without banding bar ANTIBACTERIAL + ANTI-SLIP



Article	DIMENSIONS IN mm				FLOW RATE		LOAD CAPACITY IN Kg			
	Ø A	Ø E	Ø B*	C	D	H	with Kit	without kit	LOAD CONCENTRATED	LOAD DISTRIBUTED
R-CGV 300 75 TH	300	250	75	F80	20	F145	80	180	850	6500
CGV 300 75 TH	300	250	75	F120	50	F185	80	180	850	6500
R-CGV 300 110 TH	300	250	110	F80	20	F145	135	340	850	6500
CGV 300 110 TH	300	250	110	F120	50	F185	135	340	850	6500
R-CGV 400 110 TH	400	350	110	F80	20	F145	135	340	600	5000
CGV 400 110 TH	400	350	110	F120	50	F185	135	340	600	5000
R-CGV 500 110 TH	500	450	110	F80	20	F145	135	340	450	3500
CGV 500 110 TH	500	450	110	F120	50	F185	135	340	450	3500

\* Different diameters on request.

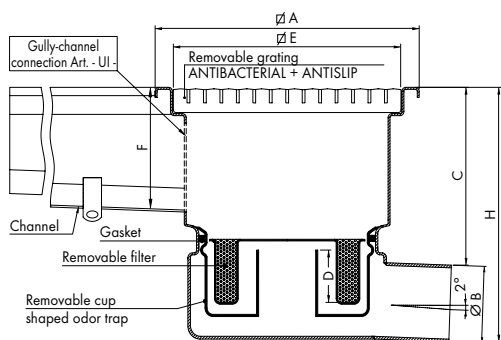
N.B. water seal depth (dimension D) of 50 mm in compliance with standard UNI EN 1253-1



Provided with removable cup shaped odor trap & filter basket kit Code KTH



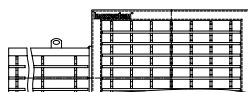
### Ultra low-profile gully with grating and horizontal outlet, with one gully-channel connection removable Total Hygienic cup shaped odor trap.



F = OVERALL CHANNEL HEIGHT

Dwg. No. 0304

Total Hygienic Multi-Slot grating without banding bar ANTIBACTERIAL + ANTI-SLIP



Article	DIMENSIONS IN mm				FLOW RATE		LOAD CAPACITY IN Kg			
	Ø A	Ø E	Ø B*	C	D	H	with Kit	without kit	LOAD CONCENTRATED	LOAD DISTRIBUTED
R-CGL 300 50 TH	300	250	50	F60	20	F110	80	180	850	6500
UR-CGL 300 50 TH	300	250	50	F47	20	F110	135	340	850	6500
UR-CGL 300 75 TH	300	250	75	F45	50	F130	80	180	850	6500
UR-CGL 300 110 TH	300	250	110	F50	50	F160	135	340	850	6500
UR-CGL 400 110 TH	400	350	110	F50	50	F160	135	340	600	5000
UR-CGL 500 110 TH	500	450	110	F50	50	F160	135	340	450	3500

\* Different diameters on request.

N.B. water seal depth (dimension D) of 50 mm in compliance with standard UNI EN 1253-1



Provided with removable cup shaped odor trap & filter basket kit Code KTH



The removable cup shaped odor trap makes it possible to empty the wastewater out of the floor drain. It is highly recommended to fill the floor drain with water after cleaning in order to stop smells from coming back up.

TOTAL HYGIENIC DRAINAGE SYSTEMS

